

ISACA Adelaide Membership Statistics

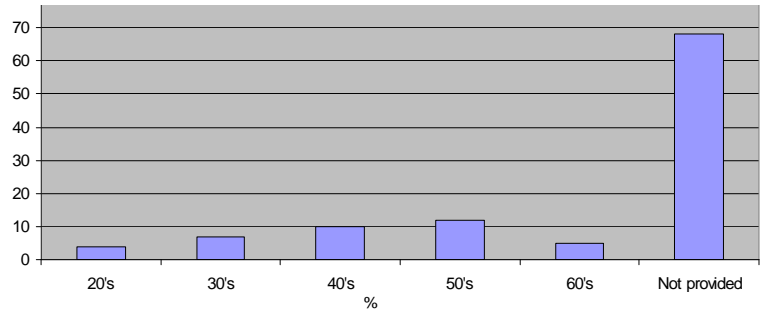
1 June 2009

P.O. BOX 104, Rundle Mall, ADELAIDE, SA 5000

Total Number of Members: 106 – medium sized chapter.

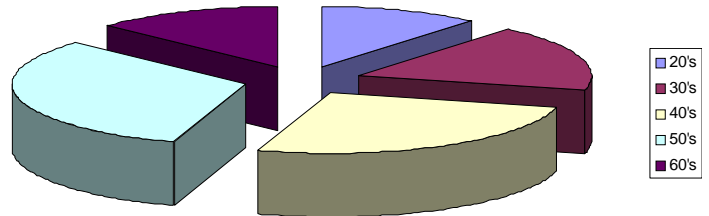
Age Analysis

Age	Members	%
20's	4 / 38	11%
30's	7 / 38	18%
40's	10 / 38	26%
50's	12 / 38	32%
60's	5 / 38	13%
Not provided	68	
Total	106	



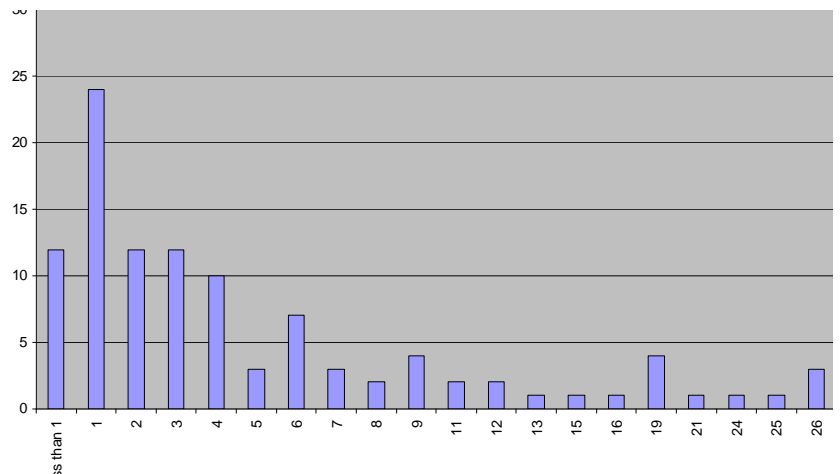
Average Member Age: 46

Average Age of Uncertified Members: 44

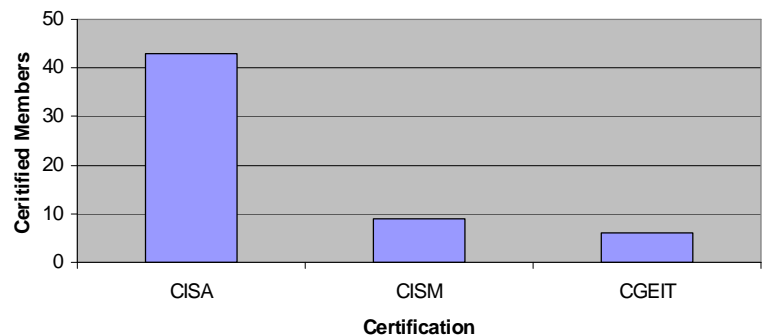


Membership Longevity

Duration	Members
Less than 1	12
1	24
2	12
3	12
4	10
5	3
6	7
7	3
8	2
9	4
11	2
12	2
13	1
15	1
16	1
19	4
21	1
24	1
25	1
26	3



Certifications Count



Certifications

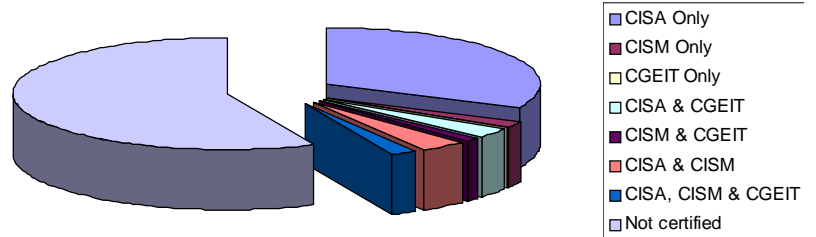
Certification	Number
CISA	43
CISM	9
CGEIT	6
Total	58

ISACA Adelaide Membership Statistics

Combinations of certifications

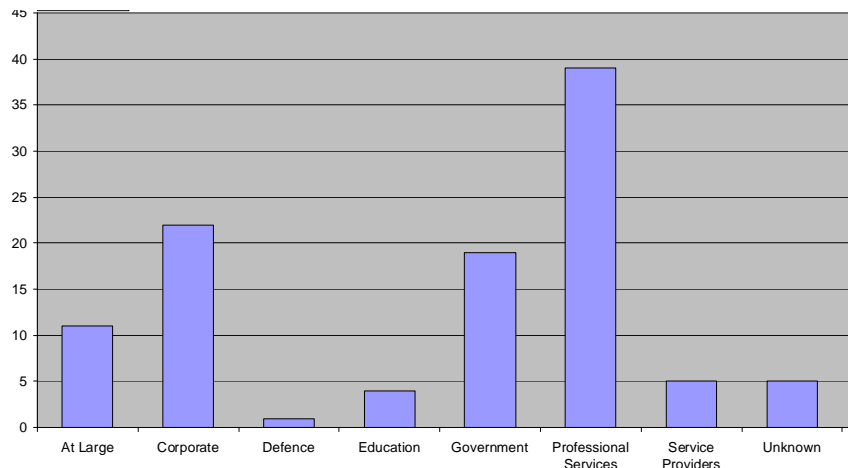
Certified Members	Number
CISA Only	34
CISM Only	2
CGEIT Only	0
CISA & CGEIT	3
CISM & CGEIT	1
CISA & CISM	4
CISA, CISM & CGEIT	2
Not certified	60
Total Certified Mem.	46
Total Members	106

Member Certification



Membership Industry

Industry/Type	Mem.
Member at Large ¹	11
Corporate ²	22
Defence	1
Education	4
Government ³	19
Professional Services ⁴	39
Service Providers ⁵	5
Unknown	5
Grand Total	106

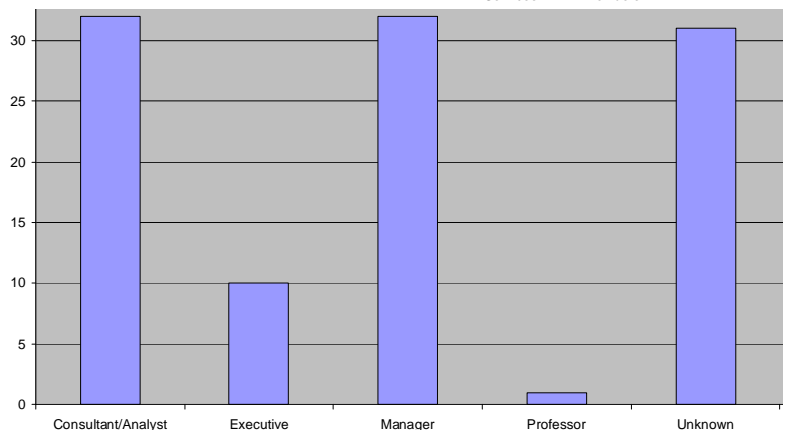


Country

Country	Mem.
Australia	100
Canada	1
Indonesia	1
South Africa	1
Taiwan	1
United Kingdom	2

Membership Seniority

Level	Members
Consultant/Analyst	32
Executive ⁶	10
Manager	32
Professor	1
Unknown	31



¹ International members

² Includes government-owned corporations (eg. WorkCover)

³ State and local government departments and councils

⁴ Including specialised and boutique consultancies (eg. CQR and EITM)

⁵ Corporations with a core mission to provide corporate IT services (eg. EDS, Data Action)

⁶ Includes GM's and directors